

School Information for Licensure Exam Candidates

TABLE OF CONTENTS

<u>TRAVEL & LODGING ARRANGEMENTS</u>	1
AIRLINE AND AIRPORT INFORMATION	3
GROUND TRANSPORTATION TO/FROM AIRPORT	3
LODGING	3
<u>DENTAL CLINIC FACILITIES & SERVICES</u>	2
BUILDING ACCESS & HOURS	4
PARKING	4
<u>PREPARING FOR THE EXAM</u>	3
HANDPIECE HOOKUPS & SONIC/ULTRASONIC HOOKUPS	4
EQUIPMENT RENTAL	4
ATTACHMENT #1	5
ATTACHMENT #2	6
ATTACHMENT #3	6
STERILIZATION/DISPENSARY	7
PATIENT SCREENING	7
RADIOGRAPHS	7
<u>DURING THE BOARD EXAM</u>	4
INFECTION CONTROL	7
ENDODONTIC LAB	8
MEDICAL EMERGENCIES	8
<u>ADDITIONAL INFORMATION</u>	5
SECURITY	9
MAINTENANCE	9
EXPENDABLE AND NON-EXPENDABLE DENTAL SUPPLIES	9
CAMPUS MAP	10
DENTAL CLINIC FLOOR PLANS	11

Welcome to the Arizona School of Dentistry & Oral Health Dental Clinic

The ASDOH Clinic is located in the Health & Technology Park at 5855 E. Still Circle Mesa AZ, 85206 (corner of Baseline and Recker/Sunview). If additional information is needed after reading this handbook, please contact the Office of Clinical Education at (480)265-8014.

1- TRAVEL AND LODGING ARRANGEMENTS

Airline and Airport Information:

Phoenix Sky Harbor International Airport is a civil-military public airport located three miles east of downtown Phoenix at 3400 E. Sky Harbor Blvd., Suite 3300, Phoenix, AZ 85034. Their phone number is (602) 273-3300.

Directions for Driving from Phoenix Sky Harbor Airport to AZ School of Dentistry and Oral Health:

Phoenix Sky Harbor International Airport
3400 East Sky Harbor Boulevard, Phoenix, AZ 85034

↑ Head west on E Sky Harbor Blvd
6 s (289 ft)

> Continue to E Sky Harbor Blvd
3 min (1.3 mi)

> Take AZ-202 Loop E and US-60 E to S Higley Rd in Mesa. Take exit 186 from US-60 E
18 min (19.0 mi)

> Take E Inverness Ave to E Still Cir
4 min (1.3 mi)

5855 East Still Circle
Mesa, AZ 85206

Lodging:

Reservations should be made directly with hotel/motels. Accommodations located less than a mile from ASDOH are listed below. Outside candidates should call for information and rates.

Residence Inn 3021 E. Banner Gateway Dr. Gilbert, AZ 85234 (480) 699-4450 (888) 236-2427	Hampton Inn & Suites 1825 N. Higley Rd. Gilbert, AZ 85234 (480) 654-4000 (800) 426-7866
------------------------------------------------------------------------------------------------------	-----------------------------------------------------------------------------------------------------

2- DENTAL CLINIC FACILITIES AND SERVICES

Building Access and Hours:

Unless otherwise requested from the examiners, the Dental clinic building will be open from 6:00 a.m. to 6:00 p.m. on exam days.

Parking:

Parking in and around the vicinity of the Dental clinic building is available at no charge to the candidates and patients. Please refrain from parking in any of the covered spaces as they are not part of the ASDOH visitor public parking areas.

3- PREPARING FOR THE EXAM

Handpiece Hookups and Sonic/Ultrasonic Hookups:

The ASDOH Clinic's operatories are equipped with a KAVO electric hand piece setup (KL701 & KL703 motors) and two standard 4-hole air driven lines **without** fiber optics. If candidates do not have a KAVO electric hand piece setup, they will need to rent one from the school or provide their own. A limited number of chairs are equipped to accept Star Dental high and low speed fiber optic Solara Titanium hand pieces. These hand pieces are available for rent should the candidate elect. **Remember that these 4-hole air driven lines are not equipped with fiber optics.** Standard ultrasonic scalers can be used at each operatory. Operatories are equipped with a quick connect and electrical outlet for the ultrasonic scalers. Candidates that will be utilizing the Simulation Clinic for their Endo procedures must use a KAVO electric hand piece and motor **ONLY**. Our Simulation Clinic does not have air driven capability.

If candidates are unfamiliar with the equipment used in our clinic (ie. ultrasonic scaler or hand piece), they are **strongly** encouraged to come to the ASDOH clinic a day or two prior to the exam so that staff can assist them with familiarizing themselves with the operatory and equipment set-up.

Equipment Rental:

<u>Dental Equipment</u>	<u>Fee</u>	<u>Deposit</u>
Electric High & Low Speed HP including motor	\$550.00+	\$2750.00
StarDental Solar High & Low Speed HP including motor	\$275.00+	\$1100.00
Operative cassette (see attachment #1)	\$55.00*	\$825.00
Periodontal cassette (see attachment #2)	\$55.00*	\$825.00
Cavitron, including Tip & Sheath	\$145.00+	\$2750.00
Curing Light	\$30.00+	\$250.00
Exam Kit (see attachment #3)	\$55.00*	\$275.00

*Rental fees for cassettes are **per day** rental fees.

+Rental fees for handpieces, cavitrons, and light cures are for the entirety of the exam.

Please note: Numbers of available cavitrons are limited.

Rental fees and equipment deposits **must be paid** with separate cashier's check two weeks before the exam. A cashier's check should be written for rental fees and one for the deposit; the latter will be returned to the candidate at the end of the exam, providing all equipment is returned in good condition. Cashier's checks should be made payable to A.T. Still University and mailed to 5855 E. Still Circle Mesa, AZ 85206 Attn: Claudia Vargas-McCormack. Please include a list of requested equipment and contact information should we need to get in touch with you. Please contact Claudia Vargas-McCormack at (480)265-8014 or cvargas@atsu.edu to reserve equipment, make equipment deposits or to pay rental fees. Reservations cannot be guaranteed until equipment deposits have been received. Because of the limited supply of rental equipment, we **strongly** encourage candidates to submit their reservation and payment as soon as possible.

Attachment #1:

Operative Cassette	
Product Number	Description
MIR5	#5 Front Surface Mouth Mirror MIR5
MH7	#7 Mirror Handle MH7
SYRA	Aspirating Anesthetic Syringe A Style 1.8ml SYRA
EXD57	#5 DE Explorer, #7 Hdl EXD57
PCP127	3-6-9-12 Color Coded Periodontal Probe, #7 Hdl PCP127
TN5475	#A6 XTS DE Composite w/ Grips TN5475
CD4/57	#4/5 DE Cleoid-Discoid, #7 Hdl. CD4/57
TN6539	XTS DE Composite Condenser TN6539
SP6061	313 Mini Spatula/PICH SP6061
CVHL1/27	#1/2 Hollenback DE Carver, #7 Hdl. CVHL1/27
BB42857	DE BB2/21 Burnisher BB42857
BB27/297	DE 27/29 Burnisher BB27/297
EXC18	#18 DE Excavator EXC18
CP52107C	11/12 DE Chisel 15-8-8 CP52107
APF2	Articulating Paper Forceps APF2
DP18L	#18L Locking Dressing Pliers DP18L
C14LSS	Demeo Carver Stainless Steel C14LSS
PLG56177	1.6-2.2 DE Plugger PLG56177
CP17/186	1MM HATCHET CP17/186
PLGOR17C	Oregon DE Plugger PLGOR17C
AC5202	CFII Amalgam Carrier DE Reg AC5202
IMS1273	large IMS Parts Box IMS1273
WA	Amalgam Well WA
AU400	Composi-tight G ring Small AU400
AU500	Composi-tight G ring Large AU500
100-9547	Universal Matrix Retainers 100-9547
107-3128	BiTine Ring Refill (Palodent ring) 107-3128
777-7991	SOF-FLEX POP-ON MANDRELS 777-7991
S4	4 Mayo Scissors, Straight

Attachment #2:

Perio Cassette	
Product Number	Description
MIR5	#5 Front Surface Mouth Mirror MIR5
MH7	#7 Mirror Handle MH7
SYRA	Aspirating Anesthetic Syringe A Style 1.8ml SYRA
EXD2R/2L7	2R 2L Explorer #7 handle EXD2R/2L7
SS3C	#3 Ceramic Sharpening Stone SS3C
PTS	3"x1/4" plastic test stick pkg of 6 PTS
EXD57	5 DE Explorer EXD57
EXD11/127	11/12 ODU DE Explorer EXD11/127
SH6/77	H6/H7 DE Scaler SH6/77
SG1/27	1/2 Gracey Curette SG1/27
PQ2N7	Nabers Probe PQ2N7
SG13/147	13/14 Gracey Curette SG13/147
PCP50927C	Perio Probe double ended PCP50927C
SBH5/67	5/6 Barnhart Curette SBH5/67
SG11/127	11/12 Gracey Curette SG11/127
S204S7	204S DE Sickle Scaler S204S7
DP2	#2 Dressing Pliers (College) non-locking

Attachment #3:

Exam Cassette	
Product Number	Description
MIR5	#5 Front Surface Mouth Mirror MIR5
MH7	#7 Mirror Handle MH7
EXD57	#5 DE Explorer, #7 Hdl EXD57
APF2	Articulating Paper Forceps APF2
PCP50927C	Perio Probe double ended PCP50927C
EXD11/127	11/12 ODU DE Explorer EXD11/127

Sterilization/Dispensary:

The Clinic sterilization area will be available to candidates on Orientation Day from 9am - 12pm in order to drop off any instruments that may need to be sterilized prior to the start of the exam. On exam days, the sterilization and dispensary areas will be available from 7:00am - 5:00pm. Candidates, patients, and dental assistants are encouraged to wait in the Clinic Reception Room from 6:30am-7:00am for the dispensary to open. All Rental equipment can be obtained from the clinic sterilization area.

Patient Screening:

No screening capabilities are available for candidates.

Radiographs:

The Arizona School of Dentistry & Oral Health (ASDOH) provides only digital radiographic imaging for the restorative exam. Candidates must have patient images **acquired and printed before arriving** at the Arizona School of Dentistry and Oral Health.

The Radiology Department is located on the first floor adjacent to the patient waiting area. During the examination, the Radiology Department will be open between the hours of 7:00 am – 4:00pm. Radiology faculty will be available to assist candidates during this time.

Existing plain film radiographs for use on the exam are acceptable as outlined in the candidate guide. We do not have the capability to print images. We do not have the capability to process traditional radiographic film (except on the endodontic portion of the exam using rapid-processing chemistry). If you have any questions please contact Terri Hanger at 480-248-8145 or thanger@atsu.edu.

Provisional Acceptance:

Provisional acceptance for the Operative section only, will be available for submission of radiographs during the window of March 27-April 11th,2019. Provisional acceptance means your patient is radiographically accepted by calibrated WREB Grading Examiners prior to the exam. If provisionally accepted, all you will need is clinical confirmation by a Floor Examiner at the exam. Preoperative radiographs for up to two (2) operative procedures will be submitted as outlined in the WREB Candidate guide. Radiographs will be uploaded to WREB's secure website by a designated ASOH radiology faculty member. Uploads can only be done by the designated faculty member(s) during the assigned window. It is your responsibility to make an appointment with your school for submission within the window and to verify that the information submitted is correct. Once the window has closed, no additional radiographs will be accepted. If you do not submit during the window, you will submit your patient(s) in the traditional manner at the clinical exam site. You will be notified of the results approximately within one (1) week after the submission window closes.

NOTE: Outside Candidates, please contact Terri Hanger at (480) 248-8145 or thanger@atsu.edu for information/instructions regarding provisional acceptance.

If you have any questions please contact Terri Hanger at (480) 248-8145 or thanger@atsu.edu.

Casting Lab:

No casting lab available for candidates.

Commercial Lab:

No commercial lab available for candidates

4- DURING THE BOARD EXAM

ASDOH Infection Control Protocol:

Surface Asepsis

Each operatory is supplied with a spray bottle for disinfectant (Cavicide) and a canister of disinfectant towelettes (Caviwipes). To ensure proper disinfection, cleaned surfaces have to remain visibly wet for at least **three** consecutive minutes.

Barriers items including all-wrap papers for the counter top, head rest covers, patient napkins with disposable napkin chains and large plastic sleeves for the bracket tray are located in the supply cabinets. Handles on the unit light, x-ray heads, light cure units and air water syringes must be covered with clear plastic bags (provided). Plastic sleeves for the saliva ejector and air/water syringe are located in the supply cabinets.

Personal Protective Equipment

Appropriate clothing is required (scrubs and closed toed shoes). Disposable gowns, gloves, masks are provided and located in the clinic. Candidates are to provide their own OSHA-acceptable protective glasses or “loops”. Antiseptic soap and alcohol hand sanitizers are available at sinks in the clinic.

Hazardous Waste

Any blood/saliva soaked waste is considered hazardous and must be disposed of in red sealed biohazard bags and taken to sterilization. For convenience, biohazard bags may be attached to the sides of the bracket tray during patient treatment.

Sharps Disposal

All needles, anesthetic cartridges, blades and any other potential sharps are to be placed in the red plastic sharps containers.

SIM Lab:

The endodontic part of the exam will be held in the School's simulation laboratory. Each SimClinic station is equipped with a manikin head with a **magnetic** mount. ASDOH does use rubber face mask shrouds on the manikins in the endo lab. Candidates will take radiographs in the SimClinic using a hand-held x-ray tube. All stations are equipped with Kavo electric high and low speed hook ups and each station has two additional high or low speed conventional 4 hole air driven lines for air driven high and low speed handpieces. All units are also equipped with high and low speed evacuation and air/water syringes. **Propane Bunsen burners will not be provided by ASDOH as the heat source for endodontic procedures. Endodontic instruments will not be provided by ASDOH and will be the responsibility of each candidate to provide their own.**

Acadental ModuPro endodontic typodont is available directly from Acadental. Information on purchasing the typodont can be obtained at www.acadental.com or by phone at (913) 384-7390. In order to attach properly to the magnetic manikins, all typodonts must be fitted with steel plates.

Expendable Materials for SIM Lab:

Deck Paper	Gowns, Disposable	Rope Wax
Endodontic Sealer	Gutta Percha	Rubber Dam
Face Masks	Irrigation Syringe	Sodium Hypochlorite
Files	Paper Points	Suction Tips
Gauze	X-ray Film size 2 D-speed	X-ray Tube Head
Gloves	RC-Prep (EDTA)	PVS material

Medical Emergencies:

In case of an emergency, please contact the Chief Examiner immediately and the following steps should be taken to ensure the safety and well being of the person involved:

1. Assure an open airway.
2. Call or instruct a person to call for help to the area instructor.
3. Instruct a person to obtain oxygen, the crash bag and AED, if necessary. Crash bags and AED are located in the wall cabinets on the first floor across from the dispensary area as well as on the second floor outside of the oral surgery sterilization area.
4. Instruct a person to telephone 911 if necessary (*no need to dial 3 for an outside line in cases of a 911 call*).
5. Provide basic care such as life support, CPR, etc. as necessary.
6. Stay with patient and help direct emergency treatment until trained faculty or paramedic team arrives.
7. The floor examiner and treating candidate can be relieved of primary care only when the paramedic team arrives but shall not leave the area without permission of the team.

5- ADDITIONAL INFORMATION

Security:

Campus security will be available in the Dental clinic building on all exam days. The security guard post is located on the first floor main entrance hallway between the elevator and the reception area entrance. The phone number for ATSU campus security is (480) 341-9075.

Maintenance:

Should a maintenance (i.e. operatory/equipment) or housekeeping issue arise, please contact Dan Dixon, the school's Dental Hardware Technician at (660) 349-8570.

Expendable Dental Supplies Provided by ASDOH:

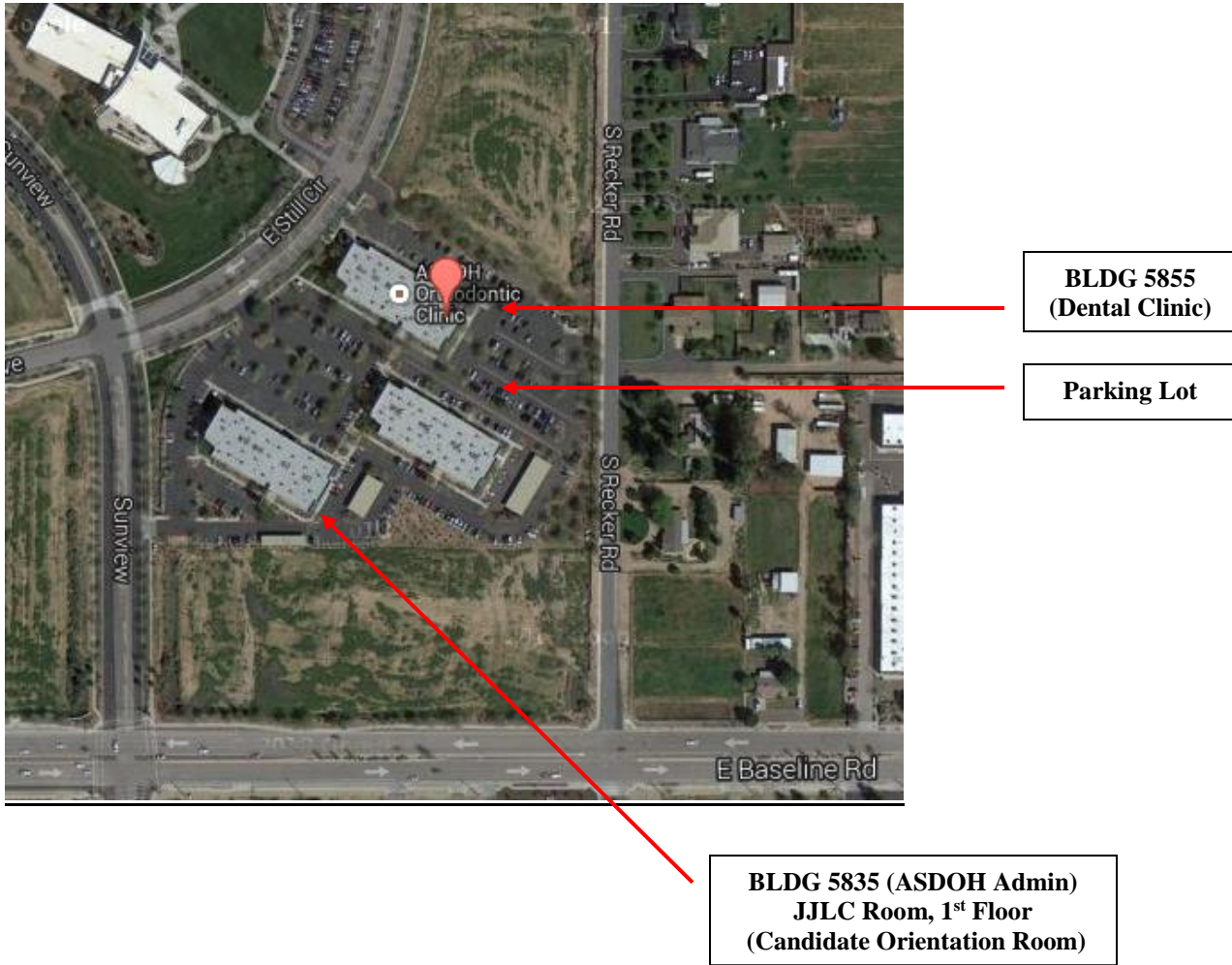
Amalgam Capsules	Gloves	Topical Anesthetic
Articulating Paper	Headrest Covers	Trash Bags
Autoclave Tape	Hemostatic Agents	Tray Covers
Cement	Instrument Trays (disposable)	PVS material (Sim Lab only)
Cotton Pellets	Local Anesthetic (Lidocaine/Carbo)	
Cotton Rolls	Needles, Short & Long (27 gauge)	
2x2 Cotton Squares	Paper Towels	
Cotton Swabs	Patient Bibs	
Disinfectant	Gloves	
Drinking Cups	Prophy Paste	
Evacuator Tips	Rubber Dams (latex/non-latex)	
Facial Tissue	Saliva Ejectors, Standard	
Floss	Topical Anesthetic	

Expendable Dental Supplies NOT Provided by ASDOH:

Blanket
Ice Packs
Impression Materials
Neck Pillow
Pencils
X-Ray Developer & Fixer
X-Ray Film

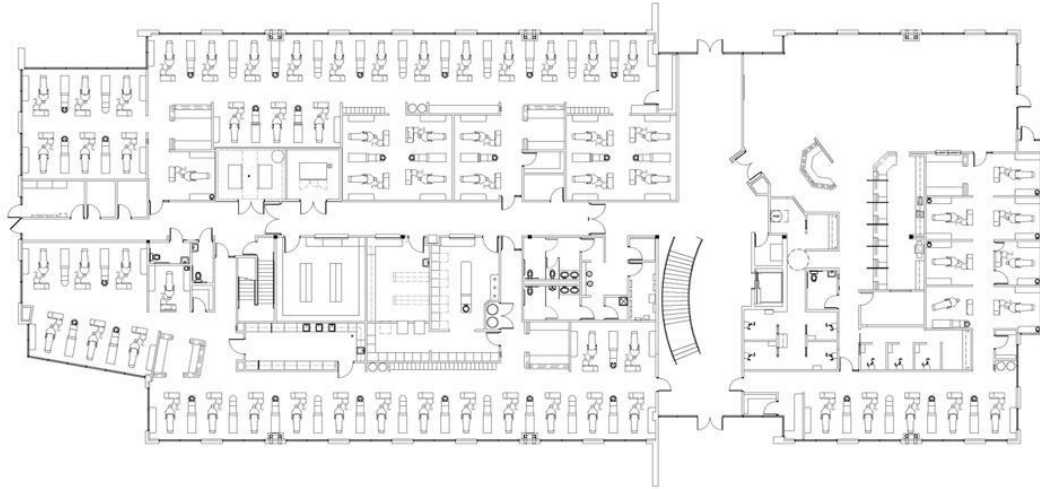
Campus Map – Aerial View:

Parking passes are not necessary. Parking is permitted anywhere **except** for covered spaces.



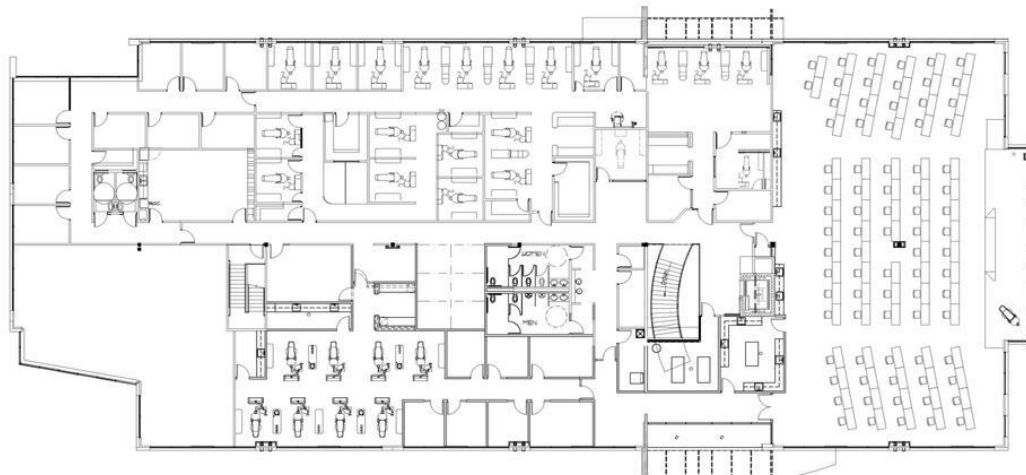
Dental Clinic Floor Plans:

North – 1st floor



South – 1st floor

North – 2nd floor



South – 2nd floor

Simulation Lab on east end of clinic (2nd Floor)